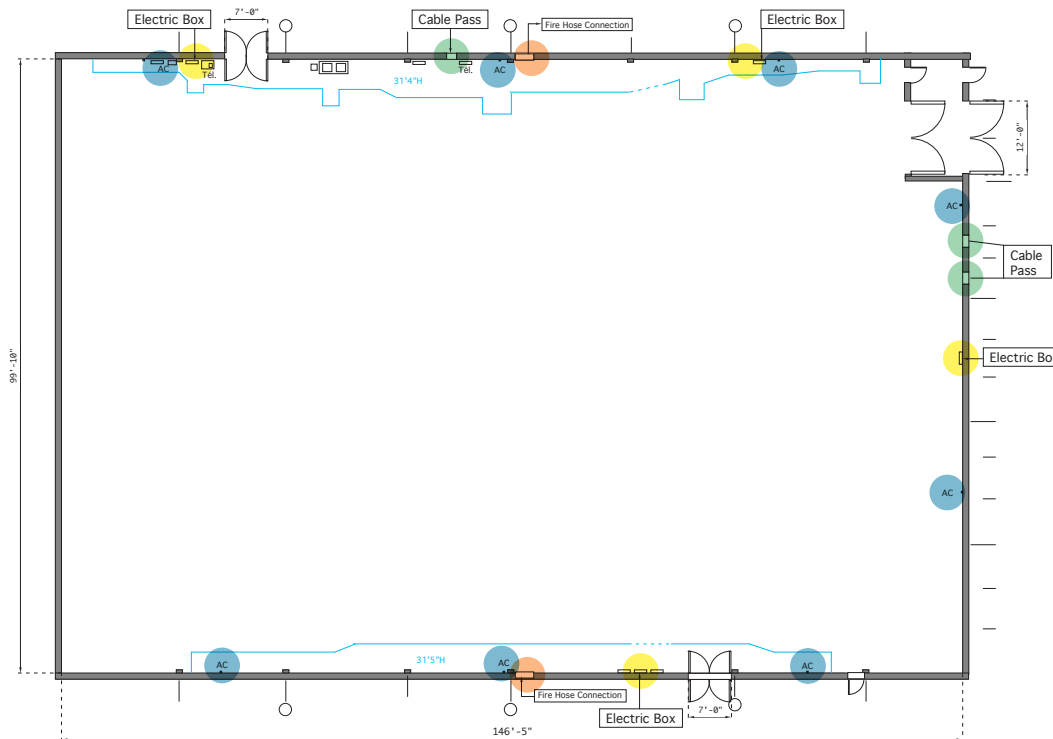
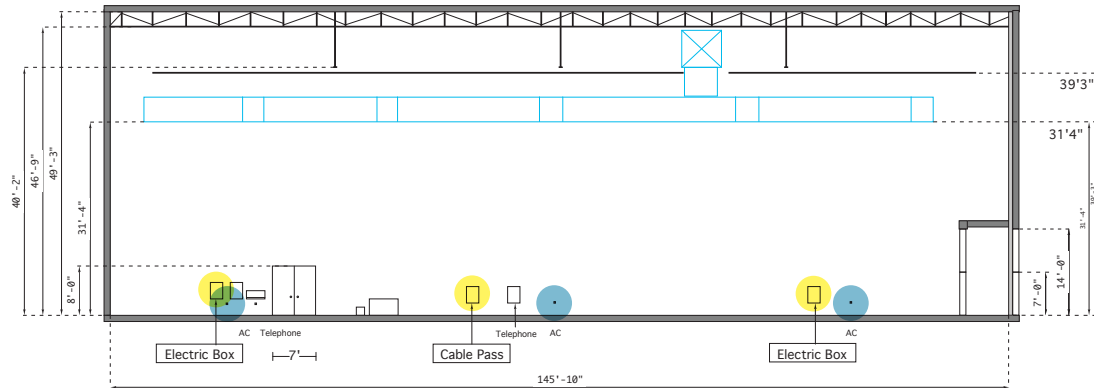


MELS

MELS 2 — STAGE F

100' x 150' x 39'3" High (Grids)
(15,000 sq ft/1,394 m²)



● AC ● FIRE HOSE CONNECTION ● ELECTRIC BOX ● CABLE PASS

CAPACITY LOAD

MOTHER BEAM

Live Load: **48 lbs/sq ft**

Dead Load: **27.2 lbs/sq ft**

Only one point: **1,000 lbs**

Two points at 8' c/c: **650 lbs per point**

Total foot/linear load: **27.17 lbs**

RAFTERS

Only one point: **2,000 lbs**

Two points at 8' c/c: **1,250 lbs per point**

Total foot/linear load: **283.33 lbs**

FIXED GRIDS

Two points at 5' c/c: **400 lbs per point**

FLOOR

Weight capacity: **125 lbs/sq ft**

Anchor depth max. = **4 in**

ELECTRIC

4 X 300 amp 120 - 208V - 3ØY

Max Capacity: **3,600 amp (100%)**

Continuous demand at **80%**

Periodic demand at **100%**

