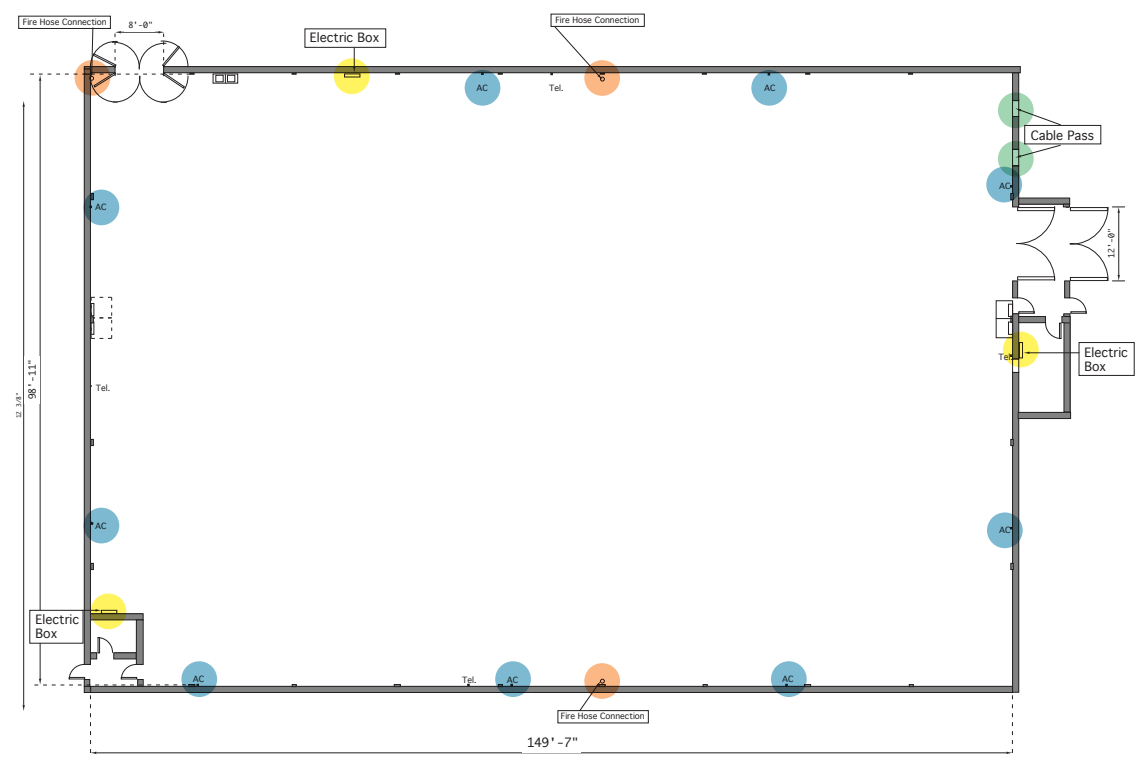
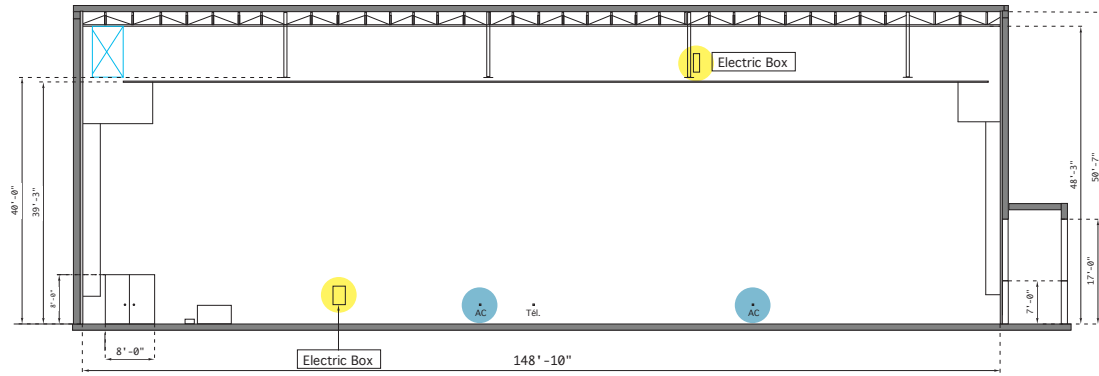


MELS

MELS 3 — STAGE K

100' x 150' x 39'3" High (Grids)
(15,000 sq ft/1,394 m²)



- AC
- FIRE HOSE CONNECTION
- ELECTRIC BOX
- CABLE PASS

CAPACITY LOAD

MOTHER BEAM

Live Load: **48 lbs/sq ft**
 Dead Load: **26 lbs/sq ft**
 Only one point: **3,000 lbs**
 Two points at 8' c/c: **2,000 lbs per point**
 Total foot/linear load: **119.76 lbs**

RAFTERS

Only one point: **6,000 lbs**
 Two points at 8' c/c: **3,000 lbs per point**
 Total foot/linear load: **840 lbs**

FIXED GRIDS

Two points at 5' c/c: **400 lbs per point**

FLOOR

Weight capacity: **200 lbs/sq ft**
 Anchor depth max. = **6 in**

ELECTRIC

4 X 300 amp 120 - 208V - 3ØY
 Max Capacity: **3,600 amp (100%)**
 Continuous demand at **80%**
 Periodic demand at **100%**

